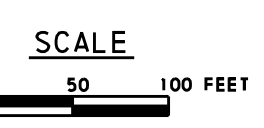


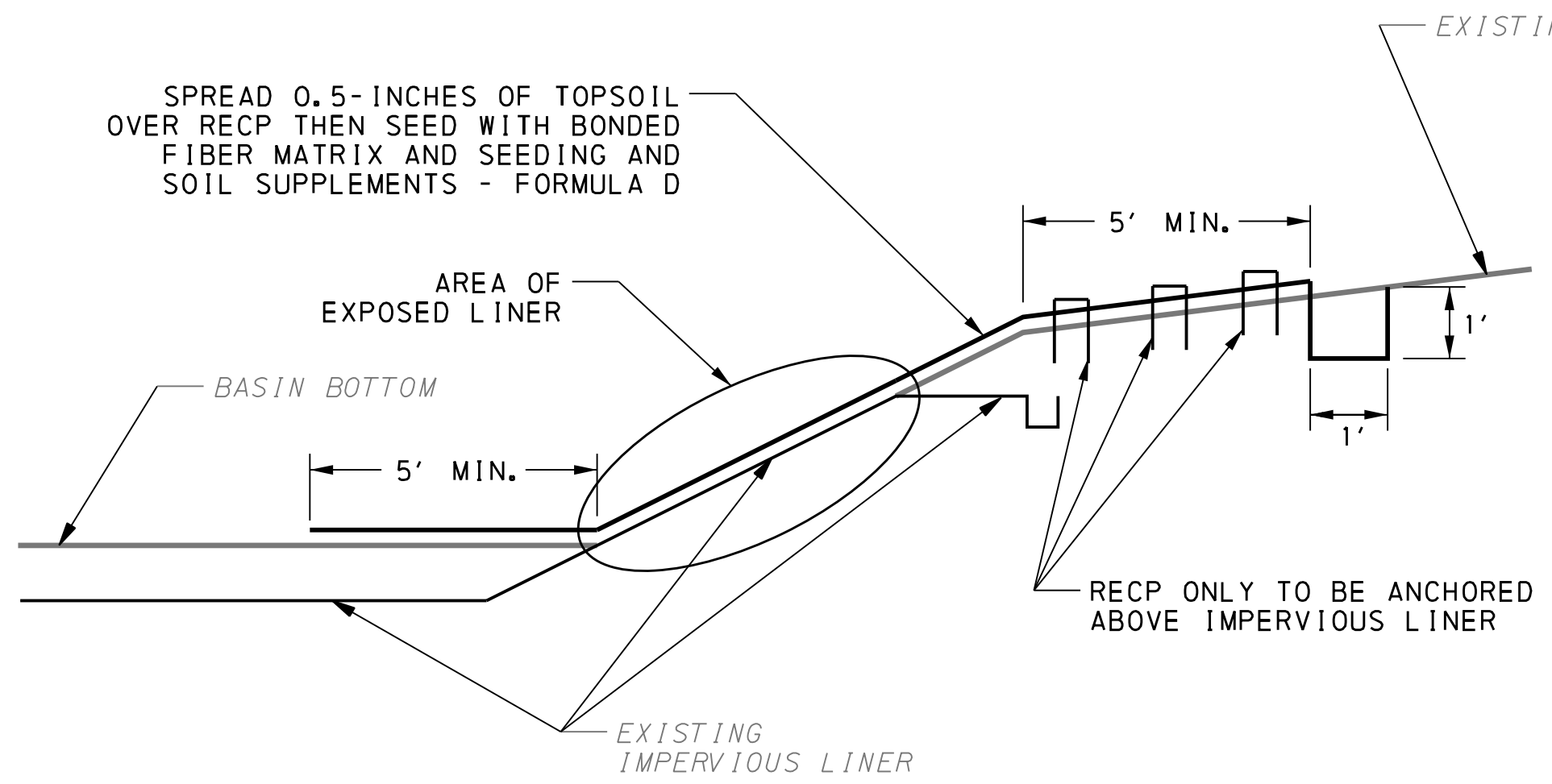
IN AREAS OF EXPOSED IMPERMEABLE LINER, REPAIR IF NECESSARY AND ADD 6" OF SAND/TOPSOIL MIX AND SEED AND STABILIZE.



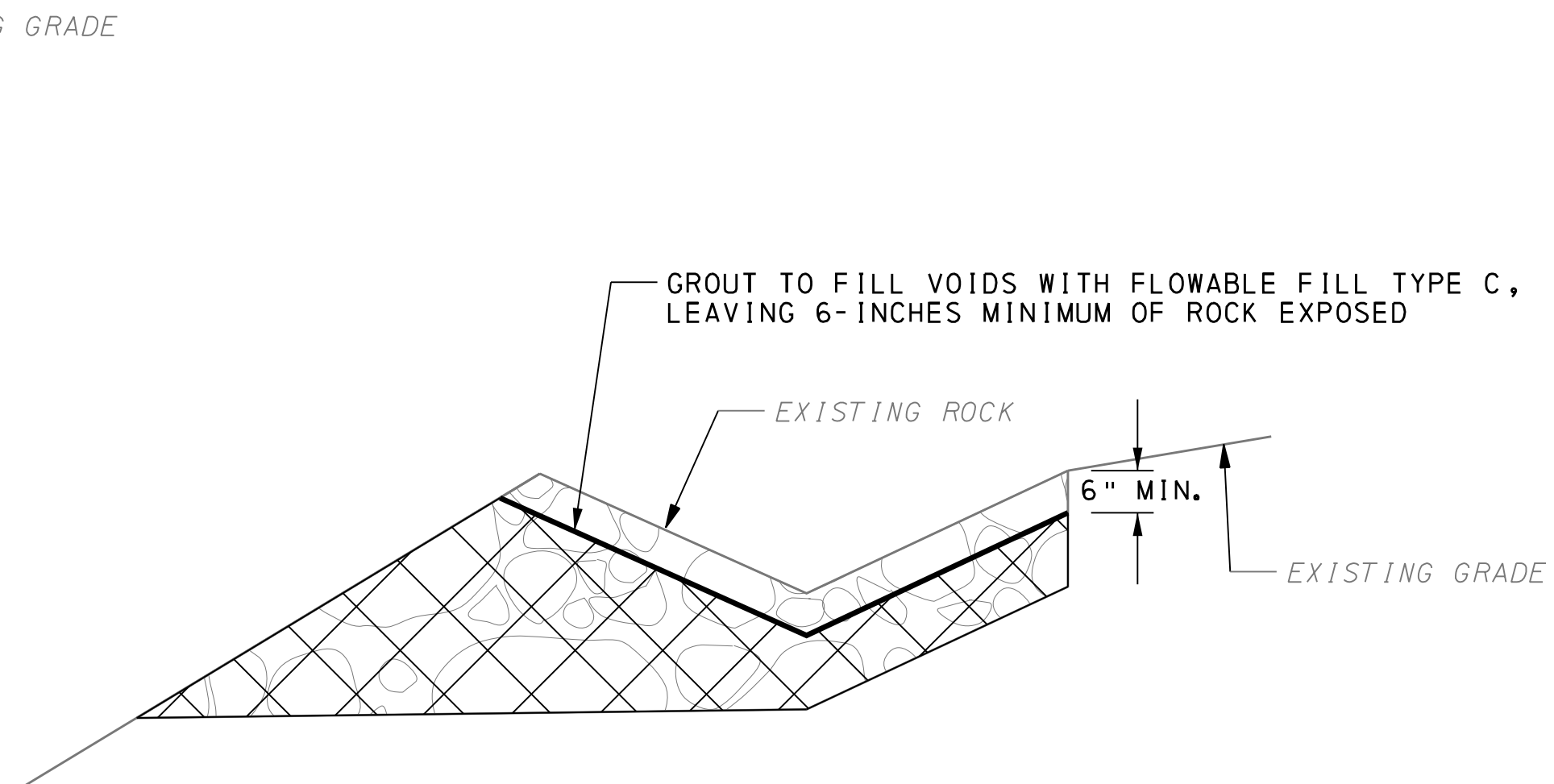
-Green shaded area is limit of maintenance work area.
 -Note: this site has a shallow impermeable liner, ensure no damage occurs to liner during maintenance activities.
 -Access VIA roadway shoulder/infield area.

CONSTRUCTION SEQUENCE

- NOTE: HEAVY EQUIPMENT SHALL NOT ENTER THE BASIN BOTTOM AT ANY TIME. COMPLETE ALL WORK FROM THE EXTERIOR WITHOUT ENTERING THE BASIN TO THE EXTENT FEASIBLE; WHERE EQUIPMENT MUST ENTER THE BASIN UTILIZE LIGHT WEIGHT EQUIPMENT AND LOW COMPACTION METHODS OUTLINED IN PUBLICATION 888 OR OTHER APPROVED SOURCE.
- EXCLUDING THE AREAS OF SEDIMENT REMOVAL AND LINER TOPSOIL REPLENISHMENT, NO EARTH DISTURBANCE IS PERMITTED IN THE BASIN.
- CARE SHOULD BE TAKEN TO AVOID PUNCTURING THE IMPERMEABLE LINER IN THE BOTTOM OF THE BASIN.
1. INSTALL ROCK CONSTRUCTION ENTRANCE.
 2. INSTALL E&S BERM AROUND OUTLET. DO NOT STAKE BERM DUE TO LINER.
 3. REPAIR THE TWO (2) VEGETATED CHANNELS AS SHOWN ON THE PLANS AND PER THE STEPS BELOW:
 - A. WITH DEPARTMENT REPRESENTATIVE, INSPECT FOR AND REPAIR ALL TEARS, PUNCTURES OR OTHER IDENTIFIED BREACHES IN THE IMPERMEABLE LINER BY INSTALLING WATER TIGHT PATCHES FOLLOWING MANUFACTURE RECOMMENDATIONS.
 - B. ONCE LINER IS REPAIRED, PLACE AT LEAST 10" OF TOPSOIL OVER ALL AREAS OF EXPOSED LINER AS SPECIFIED ON THE DETAILS.
 - C. IMMEDIATELY SEED AND STABILIZE WITH TEMPORARY SHORT-TERM, ROLLED EROSION CONTROL PRODUCT, TYPE 5A AND SEEDING AND SOIL SUPPLEMENTS - FORMULA D. ENSURE IMPERVIOUS LINER HAS AT LEAST 10-INCHES OF SOIL OVER IT TO AVOID ANCHORS FROM PUNCTURING LINER. ENSURE ANCHORS DO NOT PUNCTURE LINER DURING RECP ANCHORING.
 4. REPAIR THE ROCK-LINED CHANNEL ALONG SR 0202 AS SHOWN ON THE PLANS AND PER THE STEPS BELOW:
 - A. EXTEND THE ROCK-LINED CHANNEL BEYOND THE SLOPE ONTO FLATTER GROUND FOR AT LEAST 15 FEET. OVER-EXCAVATE AND PLACE ROCK, CLASS R-7.
 - B. GROUT THE EXISTING ROCK LINED SLOPE AND THE NEWLY PLACED ROCK. LEAVE AT LEAST 6-INCHES OF ROCK EXPOSED THROUGH THE GROUT.
 - C. ONCE GROUT HAS CURED, STABILIZE THE SLOPE THAT HAS ERODED BY PLACING ROCK, CLASS R-4 ON THE SLOPE.
 5. REPAIR THE LINER THAT HAS BEEN EXPOSED ON THE SIDE OF THE BASIN PER THE DETAILS AND THE STEPS BELOW:
 - A. CLEAR AND GRUB THE AREA ON THE BANK ABOVE THE EXPOSED LINER. CARE SHOULD BE TAKEN TO AVOID PUNCTURING THE IMPERMEABLE LINER.
 - B. EXCAVATE THE SOIL THAT HAS SLID TO THE BOTTOM OF THE BASIN. CARE SHOULD BE TAKEN TO AVOID PUNCTURING THE IMPERMEABLE LINER.
 - C. REMOVE VEGETATION FROM REMAINING VEGETATED AREAS THAT WILL BE REPAIRED.
 - C. ONCE SEDIMENT HAS BEEN CLEANED OUT, INSTALL PERMANENT ROLLED EROSION CONTROL PRODUCT, TYPE 5D ON THE EXPOSED AREA OF LINER.
 1. ANCHORS ARE TO ONLY BE USED ON THE EMBANKMENT ABOVE THE IMPERVIOUS LINER. NO ANCHORS ARE TO BE USED ON EMBANKMENT OR BASIN BOTTOM.
 2. KEY IN RECP AT LEAST 5 FEET BEYOND THE EMBANKMENT CREST.
 3. THE TRENCH FOR RECP KEY-IN SHOULD BE AT LEAST 1' DEEP AND 1' WIDE DUE TO LIMITED ANCHORS BEING USED.
 4. EXTEND RECP AT LEAST 5 FEET INTO BOTTOM OF BASIN.
 - D. SPREAD 0.5-INCHES OF TOPSOIL OVER RECP AND SEED WITH BONDED FIBER MATRIX AND SEEDING AND SOIL SUPPLEMENTS - FORMULA D.
 6. REPAIR EXPOSED LINER ON BASIN BOTTOM PER THE STEPS BELOW:
 - A. WITH DEPARTMENT REPRESENTATIVE, INSPECT BASIN BOTTOM IDENTIFYING ALL AREAS OF EXPOSED IMPERMEABLE LINER AND LOCATING VISIBLE TEARS/PUNCTURES OR BREACHES.
 - B. REPAIR LOCATED TEARS/PUNCTURES/BREACHES BY INSTALLING WATER TIGHT PATCHES FOLLOWING MANUFACTURERS RECOMMENDATIONS.
 - C. PLACE 6" OF SAND/TOPSOIL MIXTURE OVER ALL AREAS OF EXPOSED LINER.
 - D. IMMEDIATELY SEED AND STABILIZE. DO NOT PLACE STAKES OR STAPLES IN BASIN.
 7. AFTER ALL WORK IS COMPLETE, SEED AND STABILIZE ALL OTHER DISTURBED AREAS WITH TEMPORARY ROLLED EROSION CONTROL PRODUCT, TYPE 2B AND SEEDING AND SOIL SUPPLEMENTS-FORMULA D.
 8. ONCE PERMANENT STABILIZED IS ESTABLISHED, ALL REMAINING EROSION AND SEDIMENT POLLUTION CONTROL BMPs CAN BE REMOVED. DISPOSE OF ALL BMPs IN A LANDFILL OR OTHER APPROPRIATE OFF-SITE LOCATION. APPLY THE APPROPRIATE SEED FORMULA AND MULCHING OR RECP TO ANY DISTURBED AREAS RESULTING FROM THE REMOVAL OF A BMP.



SLOPE FAILURE REPAIR
NOT TO SCALE



GROUT EXISTING ROCK CHANNEL
NOT TO SCALE

SITE #6 0620 BDD 023
SWM & SCM SITE REPAIR-2
PLAN

PLAN DATE
NOVEMBER 4, 2019

PREPARED BY:
NTM ENGINEERING, INC.
DILLSBURG, PA 17019



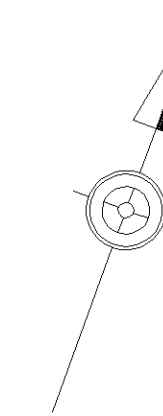
DATE: REVISED: FILED:

PROPOSED STRUCTURE DATA
 STA: 539+88.14
 TYPE: P/S CONC BOX BEAM BRIDGE
 SPAN: 1 @ 42'-2"
 UNDER CLEARANCE: 15'-0"
 SKEW: 81° 55' 20"
 ROADWAY WIDTH: 112'-0" CURB TO CURB
 RECOMMENDED:

EXISTING STRUCTURE DATA
 STATION: 539+96.20
 TYPE: DUAL I-SIMPLE SPAN PRESTRESSED
 CONC BOX BEAM BRIDGES
 SPAN: 45'-6" OUT TO OUT
 CLEAR: 14'-6" MIN
 LENGTH: 115'-0" C. TO C. ABUT BRGS
 SKEW: 81° 55' 20" (S.R. 0202)
 STRUCT NO. S-7689-A

LEGEND

- GUIDE RAIL (EXISTING)
- |—|— GUIDE RAIL (PROPOSED)
- X-X- RIGHT-OF-WAY FENCE
- SOUND BARRIER WALL
- ▲ ROCK APRON

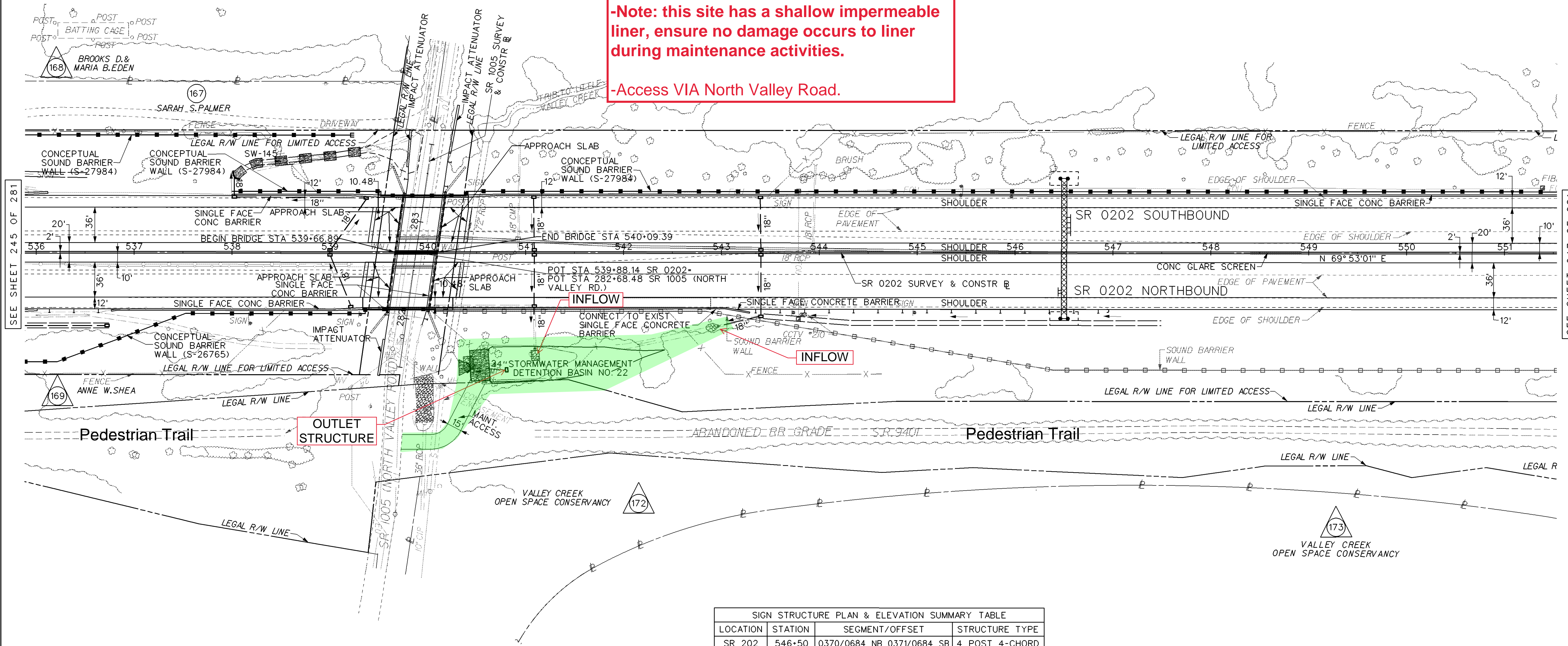


-Green shaded area is limit of maintenance work area.

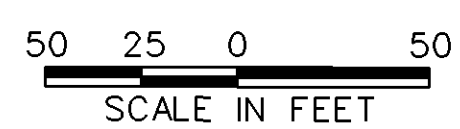
-Ensure outfall area is maintained.

-Note: this site has a shallow impermeable liner, ensure no damage occurs to liner during maintenance activities.

-Access VIA North Valley Road.



SIGN STRUCTURE PLAN & ELEVATION SUMMARY TABLE			
LOCATION	STATION	SEGMENT/OFFSET	STRUCTURE TYPE
SR 202	546+50	0370/0684 NB 0371/0684 SB	4 POST 4-CHORD



PROPOSED STRUCTURE DATA
 SOUND BARRIER WALL ALONG SR 0202 NORTHBOUND
 START STA 508+21.75 OFFSET 62.56' RT
 END STA 539+36.24 OFFSET 56.96' RT
 STRUCTURE NO: S-26765

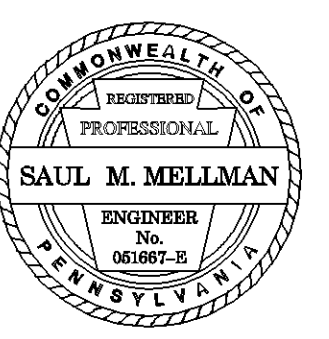
PROPOSED STRUCTURE DATA
 SOUND BARRIER WALL ALONG SR 0202 SOUTHBOUND
 START STA 507+15.20 OFFSET 121.03' LT
 END STA 576+24.77 OFFSET 166.04' LT
 STRUCTURE NO: S-27984

FOR SR 0202 PROFILE SEE SHEET 264

FOR GEOMETRY & CURVE DATA SEE SHEET 9

FOR REFERENCE CIRCLES SEE SHEET 14 SURVEY BOOK NO. 10075 TO 10090

PLANS PREPARED BY
MICHAEL BAKER JR., INC.
 HORSHAM, PENNSYLVANIA

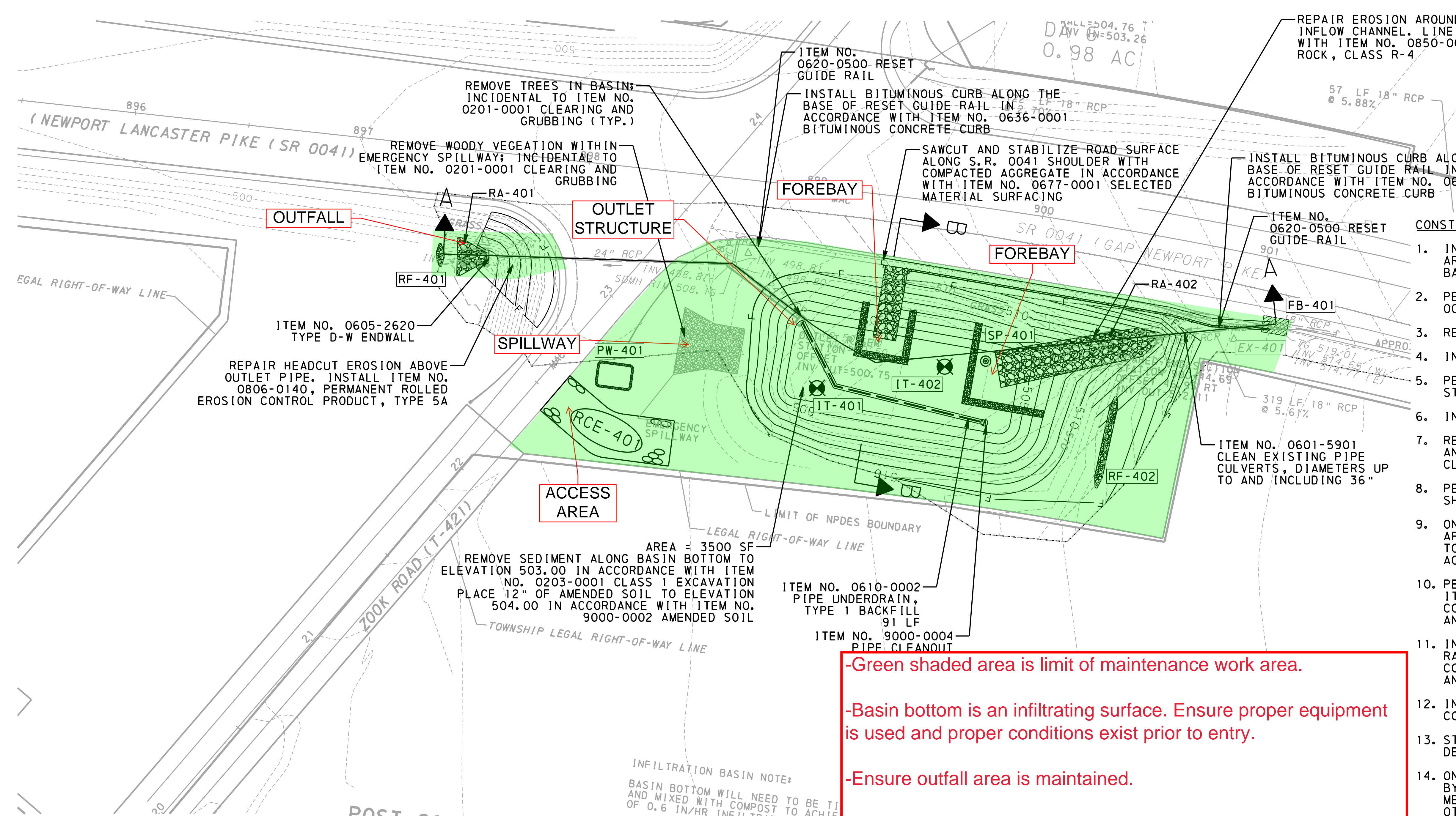
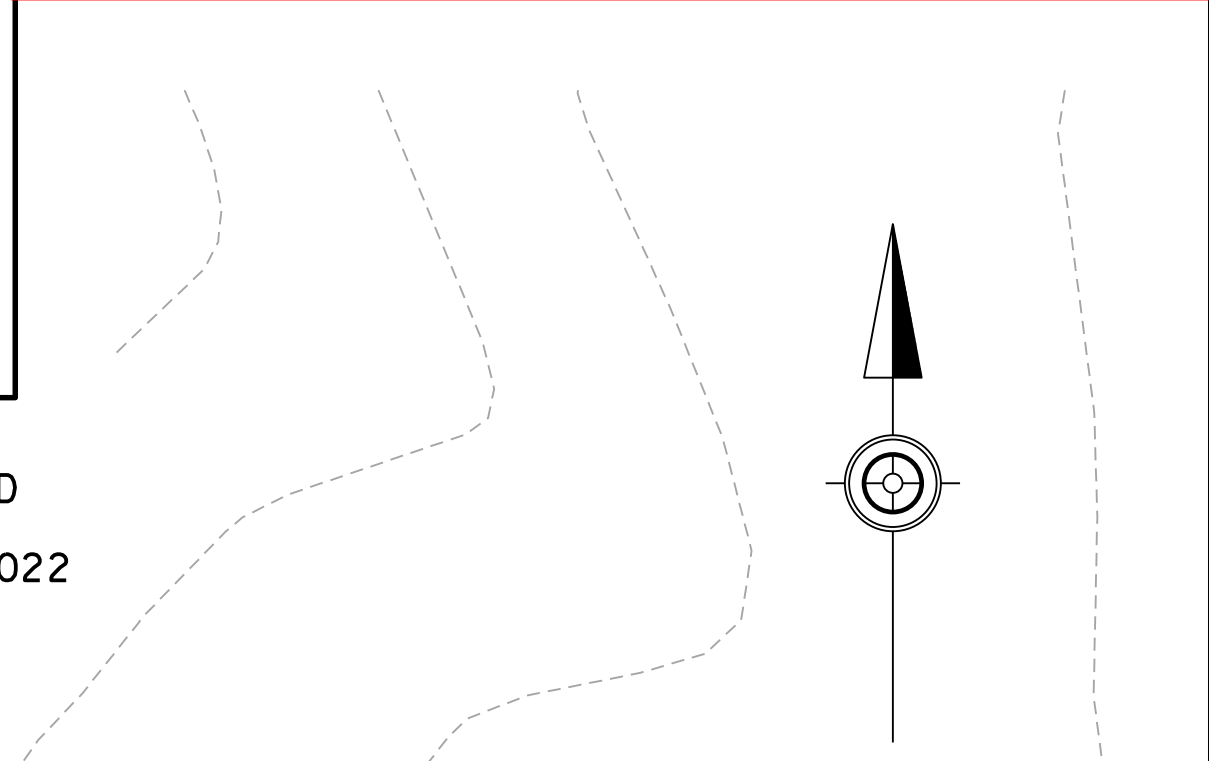


E:\202-300\320\320PLAN16.DGN 10/11/2010 C:\TMP\320PLAN16.PRF

SEE SHEET 245 OF 281

SEE SHEET 247 OF 281

— OCF —	TEMPORARY PROTECTIVE FENCE (ORANGE CONSTRUCTION FENCE)		ROCK FILTER WITH COMPOST	LEGEND		PROPOSED INLET/PIPE		SUMP PIT
-- 360 --	EXISTING CONTOUR		18CFS COMPOST FILTER SOCK		EXISTING INLET/PIPE		EXISTING CONCRETE END SECTION	
- 360 -	PROPOSED CONTOUR		INLET FILTER BAG		EXISTING HEADWALL / ENDWALL		PROPOSED CONCRETE END SECTION	
○	EXISTING MANHOLE		PUMPED WATER FILTER BAG		PROPOSED HEADWALL / ENDWALL	-----C-----	CUT & FILL	
○	PROPOSED MANHOLE		ROCK CONSTRUCTION ENTRANCE		PROPOSED TOPSOIL	— F —		
	RIP-RAP ROCK APRON		PROPOSED TRAPEZOIDAL CHANNEL				PROPOSED PIPE CLEANOUT	
----	EXISTING TRAPEZOIDAL CHANNEL						PROPOSED AMENDED SOIL	



- CONSTRUCTION SEQUENCE**
1. INSTALL ROCK CONSTRUCTION ENTRANCE, STOCKPILE AREA, PUMPED WATER FILTER BAG, INLET FILTER BAG, AND ROCK FILTERS AS SHOWN ON PLAN.
 2. PERFORM SHOULDER STABILIZATION ALONG S.R. 0041 IN ACCORDANCE WITH PLAN AND DETAIL.
 3. RESET GUIDE RAIL.
 4. INSTALL ENDWALL EW-401 AND ROCK APRON RA-401.
 5. PERFORM SIDE SLOPE GRADING AROUND EW-401 AND STABILIZE IN ACCORDANCE WITH PLAN AND DETAIL.
 6. INSTALL SUMP PIT AND DEWATER BASIN.
 7. REMOVE TRASH, EXCESS SEDIMENT, VEGETATION, AND VEGETATIVE DEBRIS IN ACCORDANCE WITH CLEARING AND GRUBBING.
 8. PERFORM SIDE SLOPE GRADING AND STABILIZE AS SHOWN ON PLAN AND DETAIL.
 9. ONCE SIDE SLOPE STABILIZATION HAS BEEN APPROVED BY THE ONSITE REPRESENTATIVE, GRADE TO 12" BELOW FINAL BASIN BOTTOM ELEVATION IN ACCORDANCE WITH PLAN AND DETAIL.
 10. PERFORM DOUBLE RING INFILTRMETER TESTS IT-401 AND IT-402 AS SHOWN ON PLAN AND COMMUNICATE RESULTS TO ONSITE REPRESENTATIVE AND DESIGN CONSULTANT FOR THEIR RECORDS.
 11. INSTALL SEDIMENT FOREBAYS, ROCK APRON RA-402, UNDERDRAIN, ORIFICE TRASH RACK AND CONCRETE PAD, AND STABILIZE AS SHOWN ON PLAN AND DETAIL.
 12. INSTALL AMENDED SOILS TO FINAL PROPOSED CONTOURS.
 13. STABILIZE BASIN BOTTOM AS SHOWN ON PLAN AND DETAIL.
 14. ONCE FINAL STABILIZATION HAS BEEN APPROVED BY THE ONSITE REPRESENTATIVE, REMOVE E&S MEASURES AND DISPOSE OF IN A LANDFILL OR OTHER APPROPRIATE OFF-SITE LOCATION. STABILIZE ANY DISTURBED AREAS RESULTING FROM THE REMOVAL OF E&S MEASURES.

-Green shaded area is limit of maintenance work area.

-Basin bottom is an infiltrating surface. Ensure proper equipment is used and proper conditions exist prior to entry.

-Ensure outfall area is maintained.

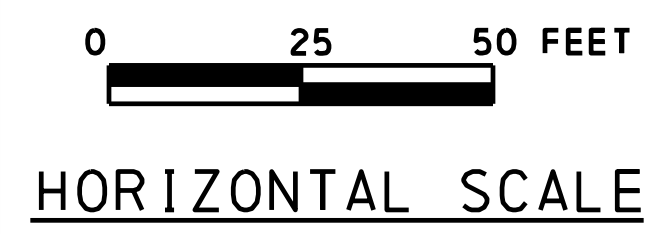
-Access area from Zook Road.

NOTES:

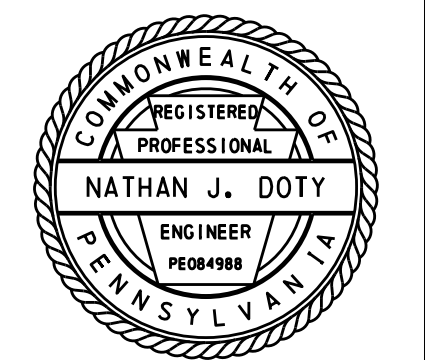
1. 0620BID013 IS LOCATED IN WEST SADBURY TOWNSHIP, CHESTER COUNTY
2. PROVIDE SEEDING IN ACCORDANCE WITH ITEM NO. 0804-0007 FORMULA W SEED MIX AND STABILIZE WITH ITEM NO. 0805-0050 MULCH CONTROL NETTING FOR NEWLY INSTALLED AMENDED SOIL ALONG BASIN BOTTOM

NOTES (CONTINUED):

3. PROVIDE SEEDING IN ACCORDANCE WITH ITEM NO. 0804-0006 FORMULA L SEED MIX AND STABILIZE WITH ITEM NO. 0806-0140 PERMANENT ROLLED EROSION CONTROL PRODUCT, TYPE 5A FOR NEWLY INSTALLED TOPSOIL ALONG BASIN AND OUTFALL SIDE SLOPES

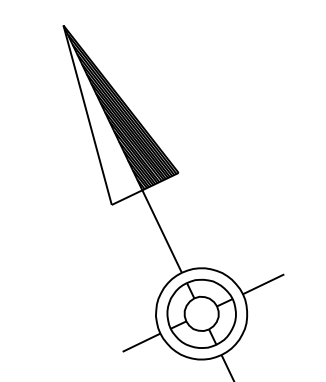
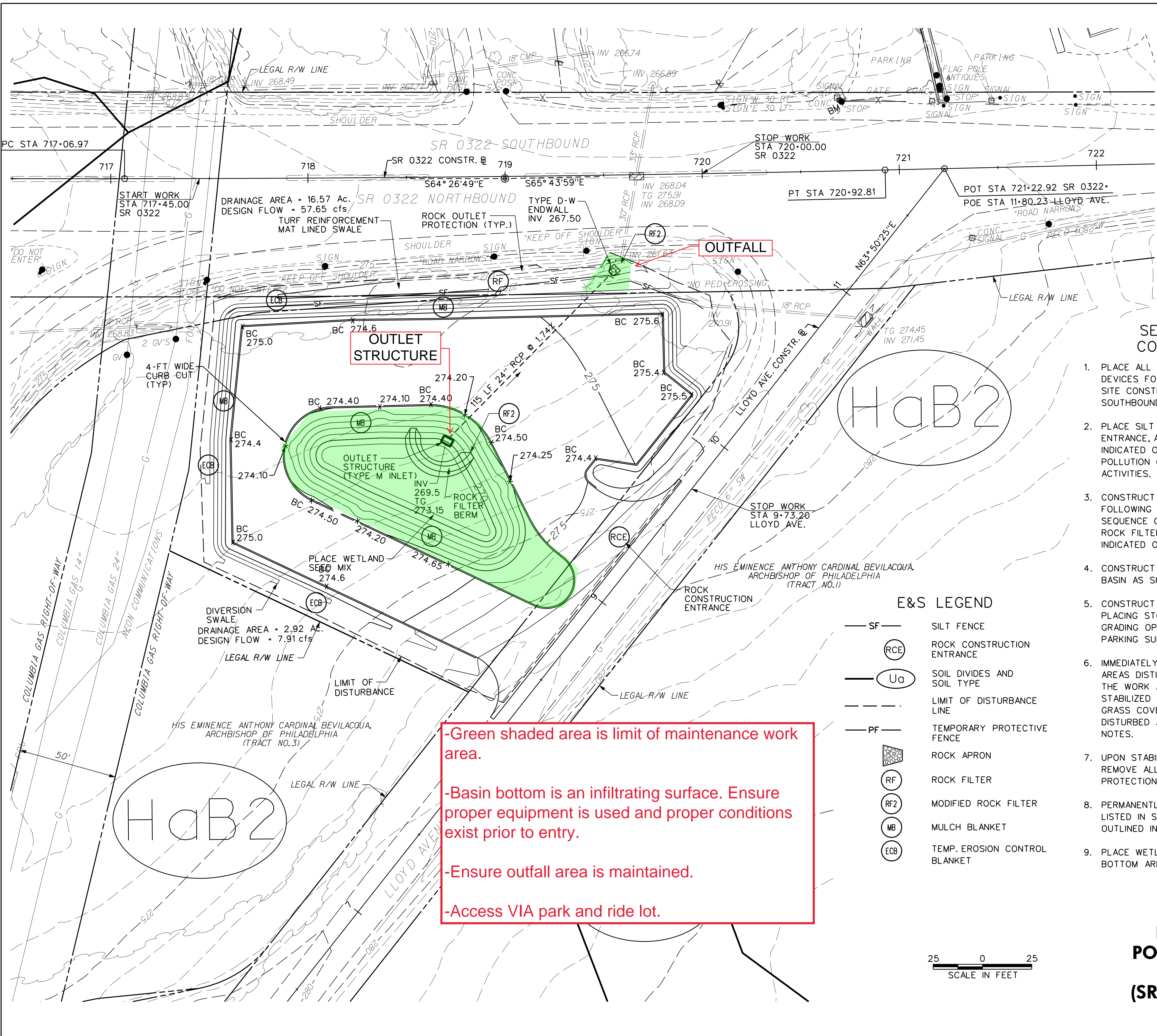


SCM REMEDIATION SITE #4
0620BID013
PLAN



8/15/2012

j:\2011 projects\010015_020\roadway\prk&ride\cod\final\design\pk&ride\co\p&r-cc-est.dgn



SOILS LEGEND

- (HaB2) HAGERSTOWN SILT LOAM, 3 TO 8% SLOPES
- (BdA) BEDFORD SILT LOAM, 0 TO 3% SLOPES

SEQUENCE OF CONSTRUCTION

1. PLACE ALL THE TRAFFIC CONTROL DEVICES FOR SHOULDER CONSTRUCTION AND SITE CONSTRUCTION ENTRANCE ON THE SOUTHBOUND LANE OF LLOYD AVENUE.
2. PLACE SILT FENCE, ROCK CONSTRUCTION ENTRANCE, AND MODIFIED ROCK FILTER AS INDICATED ON THE EROSION AND SEDIMENT POLLUTION CONTROL PLANS FOR THE SITE ACTIVITIES.
3. CONSTRUCT THE DIVERSION SWALE FOLLOWING THE TYPICAL GRASS LINED SWALE SEQUENCE OF CONSTRUCTION. PLACE THE ROCK FILTER BERM IN THE SWALE AS INDICATED ON THE PLANS.
4. CONSTRUCT THE STORMWATER DETENTION BASIN AS SHOWN ON THE PLANS.
5. CONSTRUCT THE EMBANKMENT FILL PLACING STONE SUBBASE AS SOON AS GRADING OPERATIONS ALLOW, AND CONSTRUCT PARKING SURFACES.
6. IMMEDIATELY STABILIZE ALL ERODIBLE AREAS DISTURBED DURING CONSTRUCTION. THE WORK AREA WILL BE CONSIDERED STABILIZED WHEN A MINIMUM OF 70% UNIFORM GRASS COVER IS ESTABLISHED ON ALL DISTURBED AREAS. REFER TO STABILIZATION NOTES.
7. UPON STABILIZATION OF ALL AREAS, REMOVE ALL SILT FENCE AND INLET PROTECTION.
8. PERMANENTLY STABILIZE ALL BMP AREAS LISTED IN STEP 7 USING THE PROCEDURES OUTLINED IN STEP 6.
9. PLACE WETLAND SEED MIX WITHIN BASIN BOTTOM AREA.

E&S NOTES

1. ALL DISTURBED TOPSOIL SHALL BE SAVED AND STOCKPILED FOR LATER USE.
2. DEPOSITION OF DREDGED OR EXCAVATED MATERIAL AND ALL EARTHWORK OPERATIONS WILL BE CARRIED OUT IN SUCH A WAY AS TO MINIMIZE EROSION OF THE MATERIAL.
3. AT THE END OF EACH WORK DAY, ANY SEDIMENT TRACKED OR CONVEYED ONTO A PUBLIC ROADWAY WILL BE REMOVED AND REDEPOSITED ONTO THE CONSTRUCTION SITE. REMOVAL CAN BE COMPLETED THROUGH THE USE OF MECHANICAL OR HAND TOOLS, BUT MUST NEVER BE WASHED OFF THE ROAD BY THE USE OF WATER.
4. SEDIMENT REMOVED FROM THE E&S CONTROL FACILITIES SHALL BE DISPOSED OF IN LANDSCAPED AREAS OUTSIDE OF STEEP SLOPES, WETLANDS, FLOODPLAINS OR DRAINAGE SWALES AND IMMEDIATELY STABILIZED, OR PLACED IN TOPSOIL STOCKPILES. AN E&S PLAN SHALL BE SUBMITTED TO THE CHESTER COUNTY CONSERVATION DISTRICT FOR ALL OFF-SITE SPOIL AREAS.
5. THE CONTRACTOR IS ADVISED TO BECOME THOROUGHLY FAMILIAR WITH THE PROVISIONS OF THE APPENDIX 64, EROSION CONTROL RULES AND REGULATIONS, TITLE 25, PART 1, DEPARTMENT OF ENVIRONMENTAL PROTECTION, SUBPART C, PROTECTION OF NATURAL RESOURCES, ARTICLE III, WATER RESOURCES, CHAPTER 102 EROSION CONTROL.
6. THE EROSION AND SEDIMENT CONTROL PLAN SHALL BE AVAILABLE FOR REVIEW AND INSPECTION BY THE DEPARTMENT OR THE COUNTY CONSERVATION DISTRICT AT THE PROJECT SITE DURING ALL STAGES OF THE EARTH DISTURBANCE ACTIVITY.

E&S LEGEND

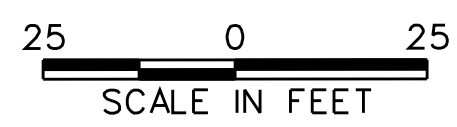
- SF — SILT FENCE
- (RCE) ROCK CONSTRUCTION ENTRANCE
- (Ua) SOIL DIVIDES AND SOIL TYPE
- LIMIT OF DISTURBANCE LINE
- PF — TEMPORARY PROTECTIVE FENCE
- (RF) ROCK APRON
- (RF2) ROCK FILTER
- (MB) MODIFIED ROCK FILTER
- (MB) MULCH BLANKET
- (ECB) TEMP. EROSION CONTROL BLANKET

-Green shaded area is limit of maintenance work area.

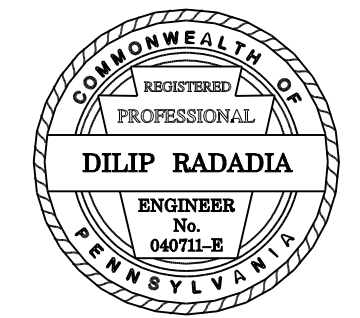
-Basin bottom is an infiltrating surface. Ensure proper equipment is used and proper conditions exist prior to entry.

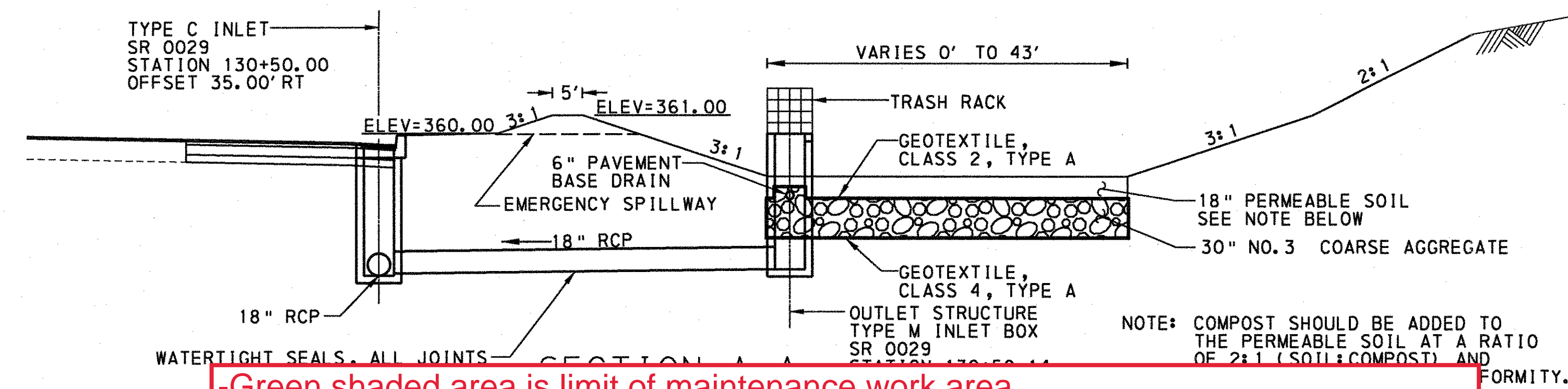
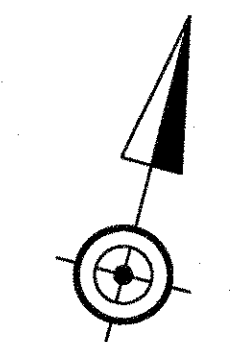
-Ensure outfall area is maintained.

-Access VIA park and ride lot.



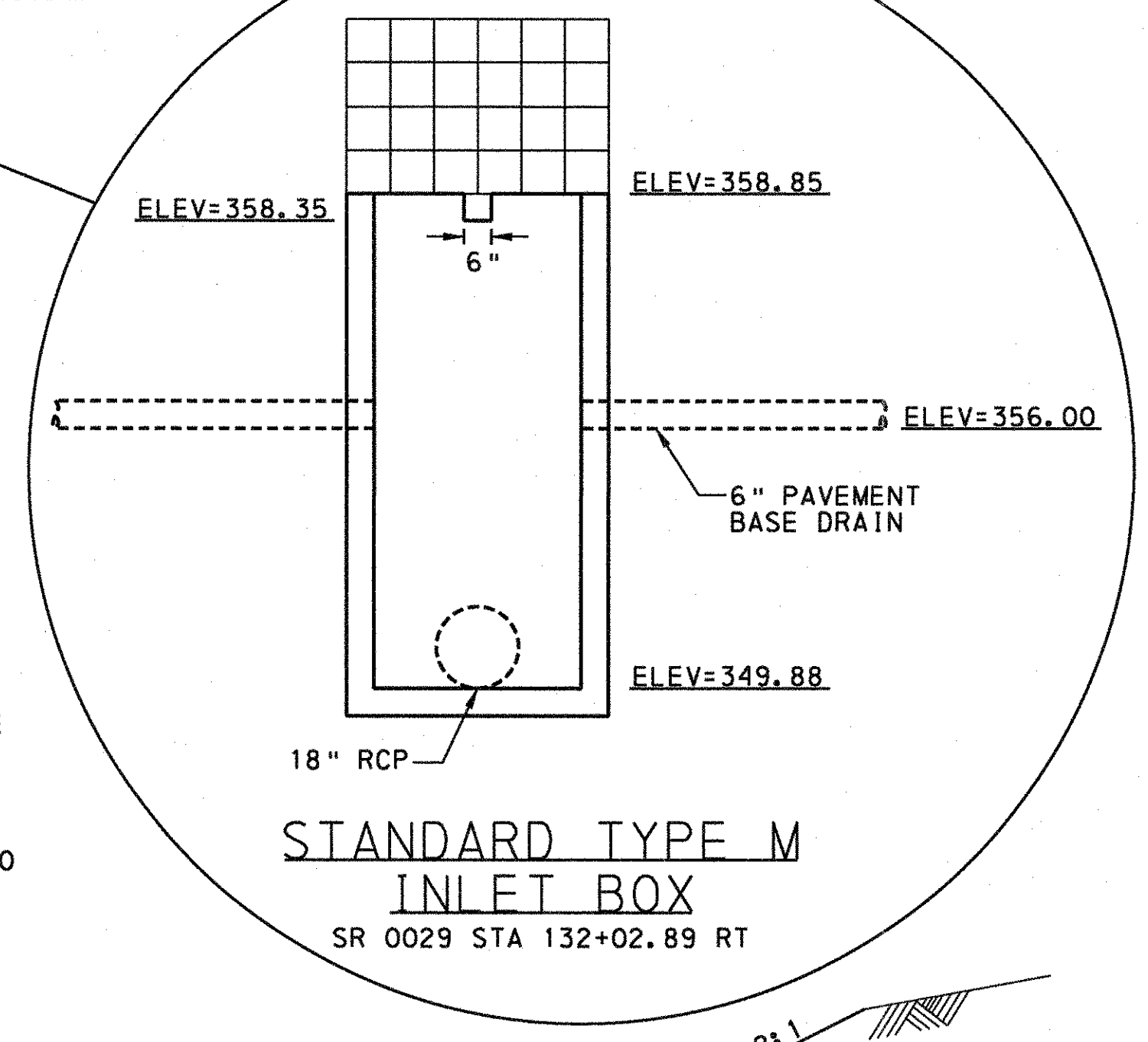
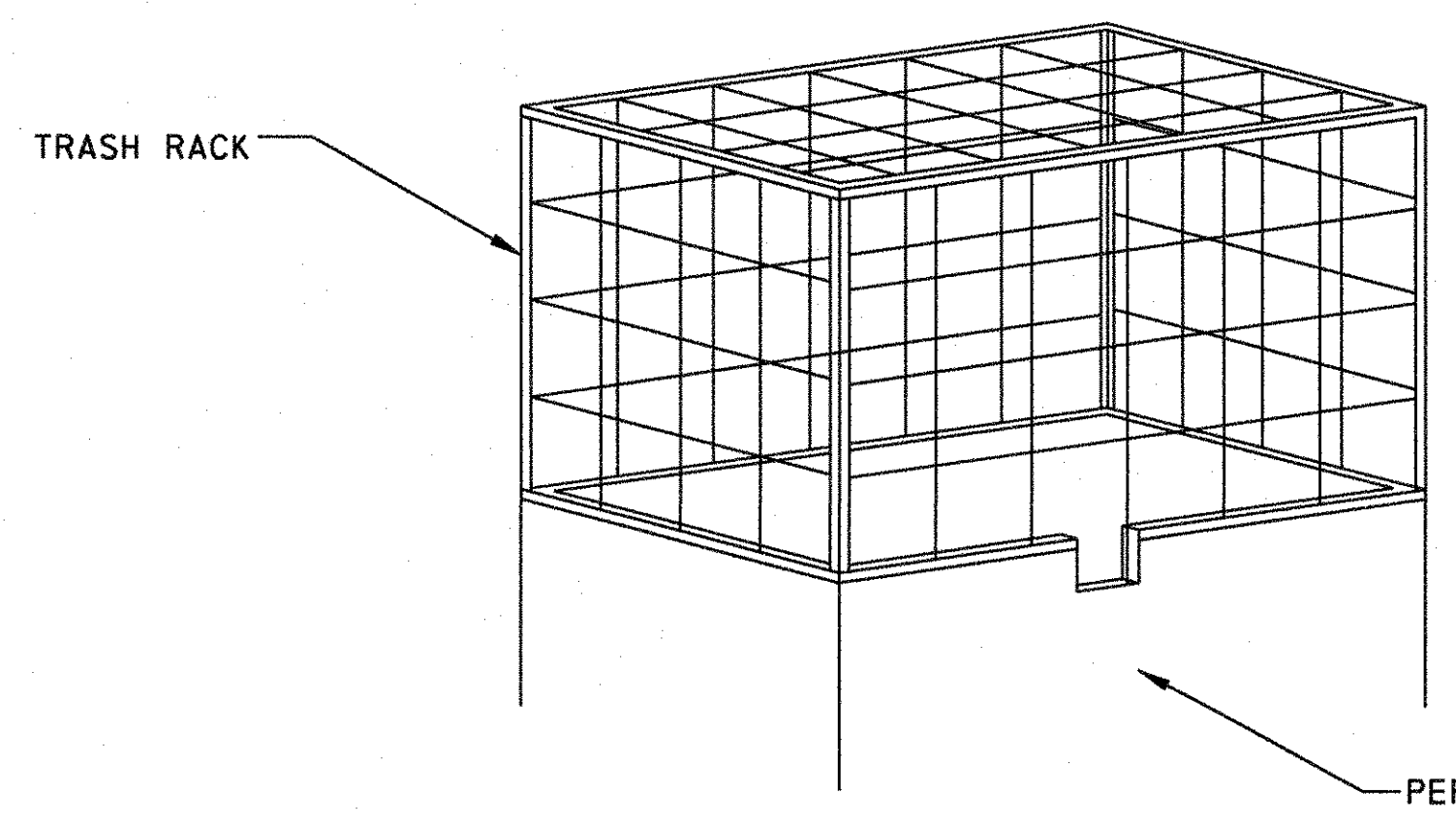
**EROSION & SEDIMENT POLLUTION CONTROL PLAN
PARK AND RIDE LOT
(SR 0322 AND LLOYD AVE.)**



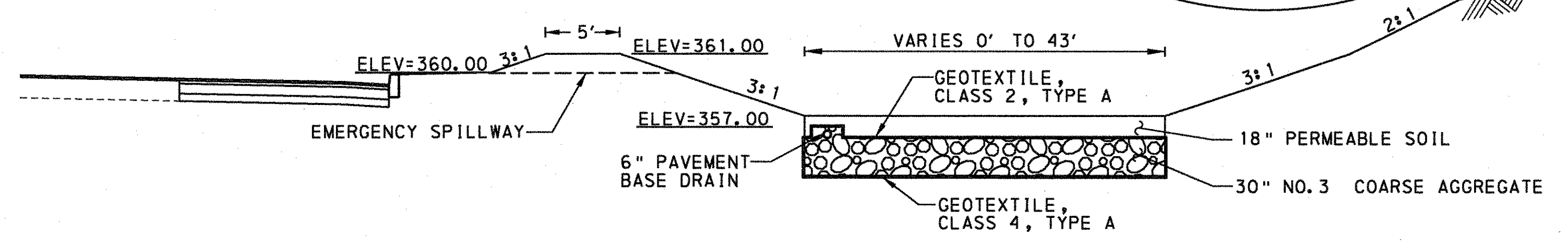


- Green shaded area is limit of maintenance work area.
- Basin bottom is an infiltrating surface. Ensure proper equipment is used and proper conditions exist prior to entry.
- Mow SCM bottom surface only during the fall maintenance cycle.
- Access VIA roadway shoulder.

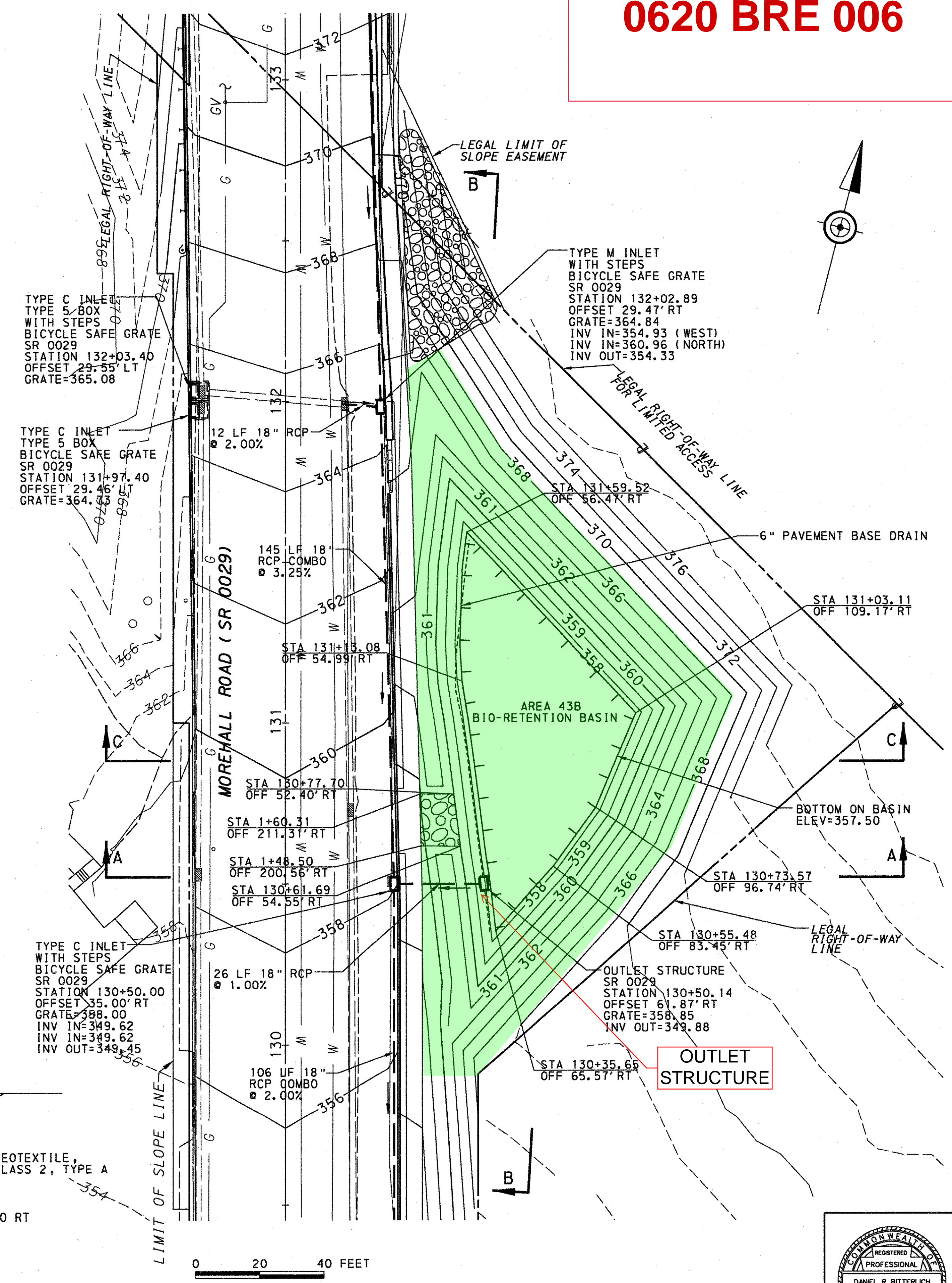
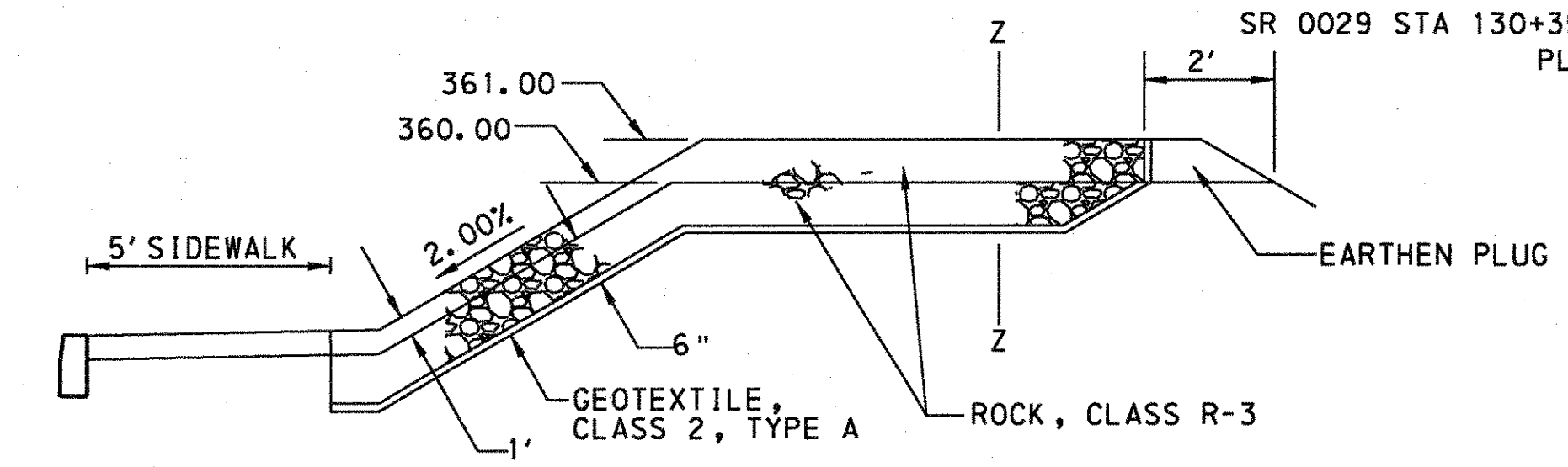
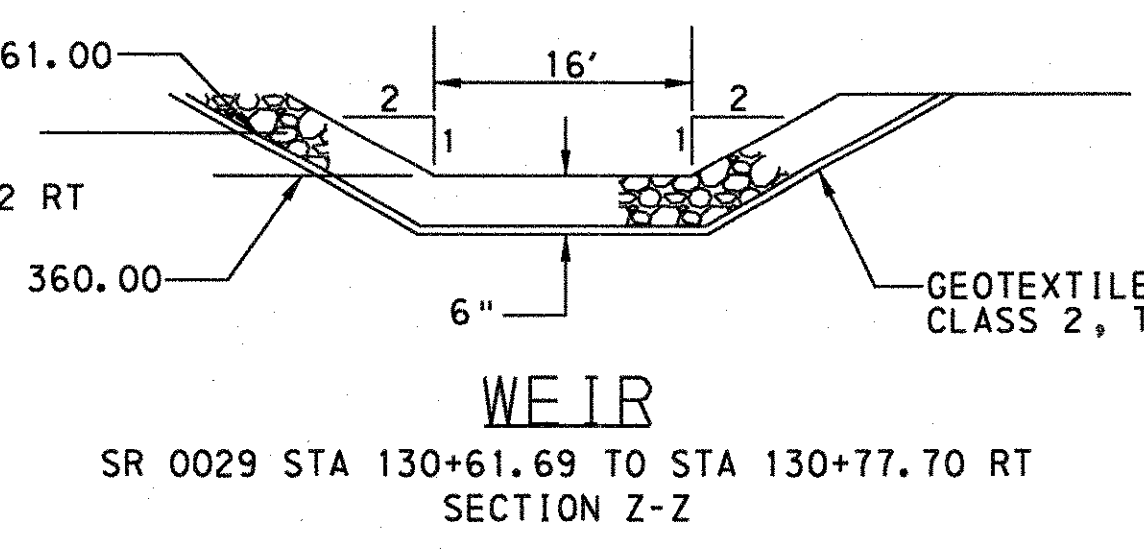
SECTION B-B



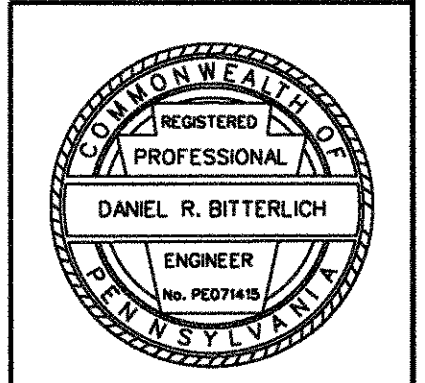
TRASH RACK COMPOSED OF 1" X 1" X 1/8" L (TYP.) AND #4 BARS (TYP.) WELDED TO THE ANGLES AND AT EACH INTERSECTION OF THE BARS; #4 BARS SPACED @ 1/2 THE DIAMETER OF THE BARREL MAX.



SECTION C-C
RIPRAP OUTLET



POST-CONSTRUCTION STORMWATER MANAGEMENT PLAN



J:\TRAM\00002 (SR 0029 - Section AL2) CAD\VP\lan\pocsm 01.dgn 4/16/2012 5:08:30 PM db11r11ch

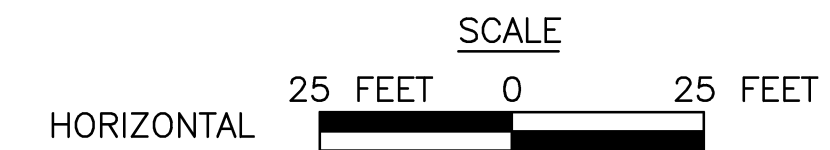
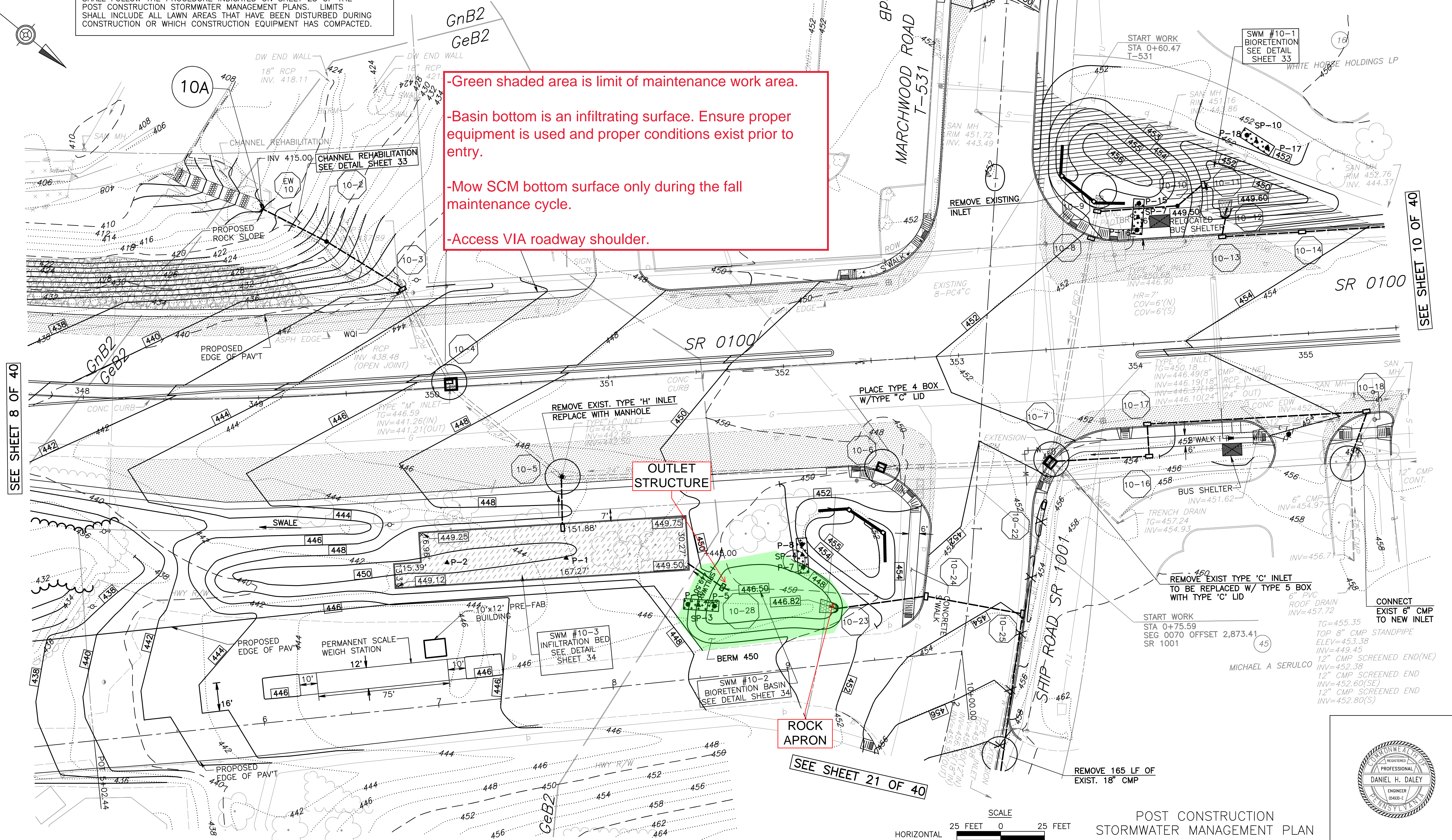
SOIL AMENDMENTS AND RESTORATION
 THE CONTRACTOR SHALL BE REQUIRED TO INSTALL SOIL AMENDMENTS AND RESTORE ALL DISTURBED AREAS WITHIN THE PROJECT LIMITS INCLUDING ALL AREAS COMPACTED BY CONSTRUCTION EQUIPMENT PRIOR TO FINAL STABILIZATION. SOIL AMENDMENTS AND RESTORATION SHALL FOLLOW THE PROCEDURE INDICATED ON SHEET 25 OF THE POST CONSTRUCTION STORMWATER MANAGEMENT PLANS. LIMITS SHALL INCLUDE ALL LAWN AREAS THAT HAVE BEEN DISTURBED DURING CONSTRUCTION OR WHICH CONSTRUCTION EQUIPMENT HAS COMPACTED.

- Green shaded area is limit of maintenance work area.
- Basin bottom is an infiltrating surface. Ensure proper equipment is used and proper conditions exist prior to entry.
- Mow SCM bottom surface only during the fall maintenance cycle.
- Access VIA roadway shoulder.

SEE SHEET 8 OF 40

SEE SHEET 10 OF 40

SEE SHEET 21 OF 40



POST CONSTRUCTION
 STORMWATER MANAGEMENT PLAN



SOIL AMENDMENTS AND RESTORATION
THE CONTRACTOR SHALL BE REQUIRED TO INSTALL SOIL AMENDMENTS AND RESTORE ALL DISTURBED AREAS WITHIN THE PROJECT LIMITS INCLUDING ALL AREAS COMPACTED BY CONSTRUCTION EQUIPMENT PRIOR TO FINAL STABILIZATION. SOIL AMENDMENTS AND RESTORATION SHALL FOLLOW THE PROCEDURE INDICATED ON SHEET 25 OF THE POST CONSTRUCTION STORMWATER MANAGEMENT PLANS. LIMITS SHALL INCLUDE ALL LAWN AREAS THAT HAVE BEEN DISTURBED DURING CONSTRUCTION OR WHICH CONSTRUCTION EQUIPMENT HAS COMPACTED.

- Green shaded area is limit of maintenance work area.
- Basin bottom is an infiltrating surface. Ensure proper equipment is used and proper conditions exist prior to entry.
- Mow SCM bottom surface only during the fall maintenance cycle.
- Access VIA roadway shoulder.

RUTGERS DRIVE T-510

START WORK STA 0+56 T-510

OUTLET STRUCTURE (TO BE REMOVED)

SWM #5-1 BIORETENTION BASIN SEE DETAIL SHEET 28

SWM #4-2 BIORETENTION BASIN / INFILTRATION BED SEE DETAIL SHEET 27

SWM #4-1 INFILTRATION BED SEE DETAIL SHEET 27

SWM #5-1 BIORETENTION BASIN SEE DETAIL SHEET 28

STORM GRATE
TG=504.08
INV=496.60(IN N.W.)
INV=494.68(IN S.)
INV=494.60(IN W.)
INV=494.58(OUT N.)

BLACK WATER FALLS TRUST
ROBERT E BROTZMAN III TRU

STORM MH
RIM=511.51
INV=505.86(W)
INV=505.81(SW)
INV=505.73(E)

WQI

CONC CURB

TYPE "C" INLET
TG=506.83
INV=497.27
INV=497.14

TYPE "M" INLET
TG=503.45
INV=499.26(IN S)
INV=498.98(OUT N)

CONVERT EXIST INLET TO MANHOLE
TYPE "H" INLET
TG=501.98
INV=500.16
INV=499.62

STOP WORK
STA 2+28.93
T-510

START WORK
STA 0+56
T-510

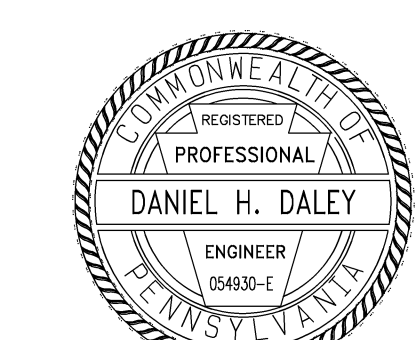
START WORK
STA 0+35.00
T-580

SEE SHEET 23 OF 40

SEE SHEET 23 OF 40

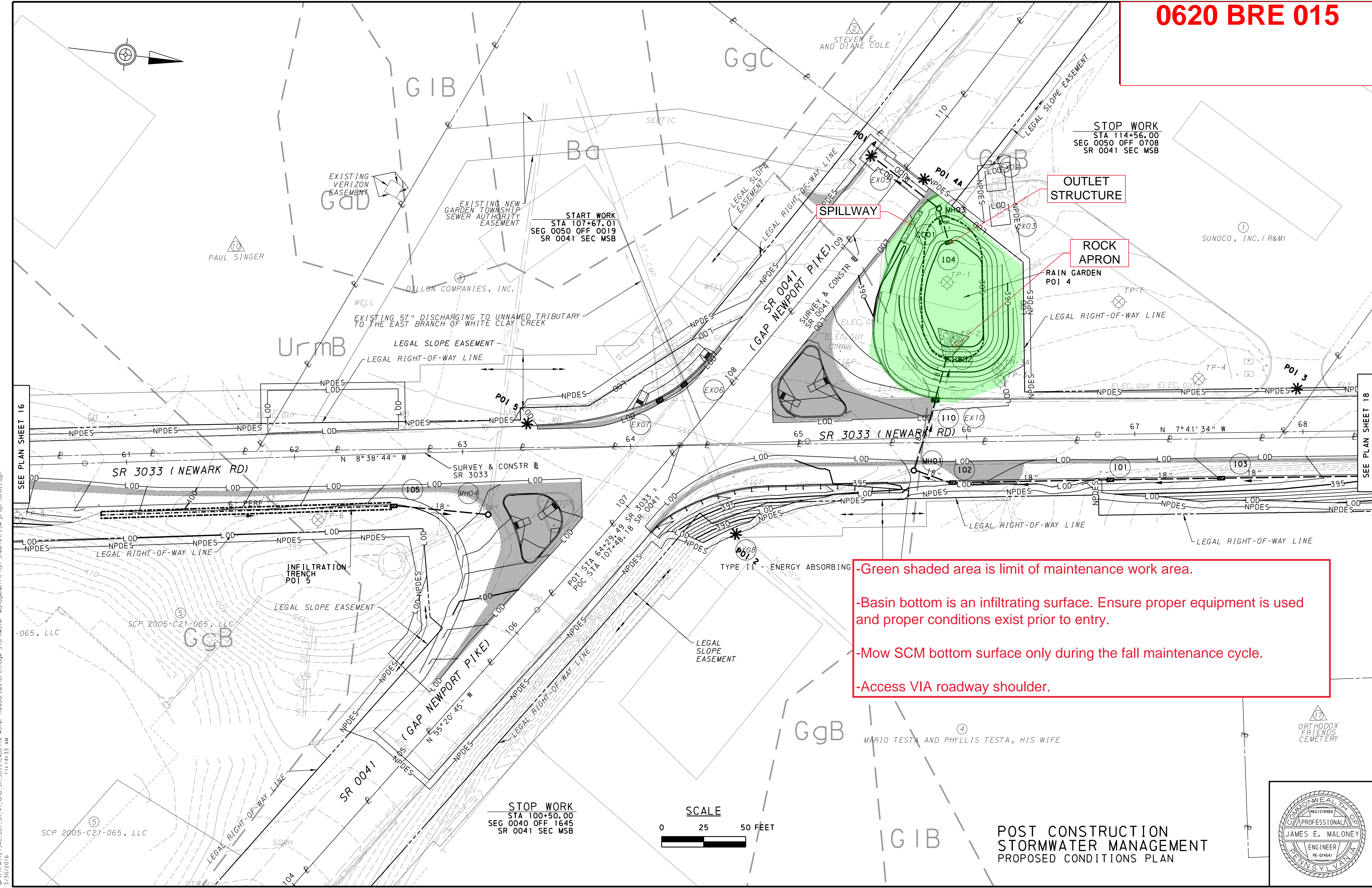
SEE SHEET 16 OF 40

SEE SHEET 14 OF 40



OPERATOR: F:\UB\1265-168\Plan Set\rt100-b15.pro
FILE NAME:

11/13/2013
PLOTTED:



STOP WORK
STA 114+56.00
SEG 0050 OFF 0708
SR 0041 SEC MSB

OUTLET
STRUCTURE

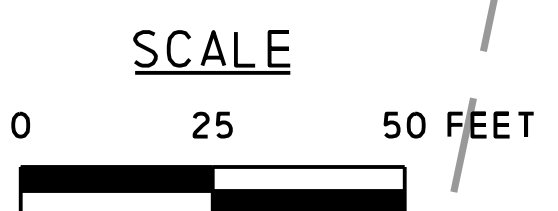
ROCK
APRON

SPILLWAY

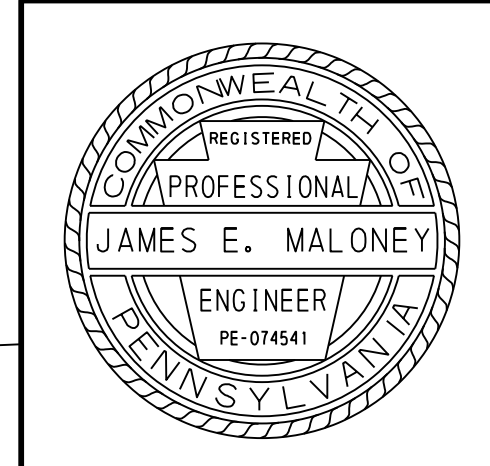
START WORK
STA 107+67.01
SEG 0050 OFF 0019
SR 0041 SEC MSB

STOP WORK
STA 100+50.00
SEG 0040 OFF 1645
SR 0041 SEC MSB

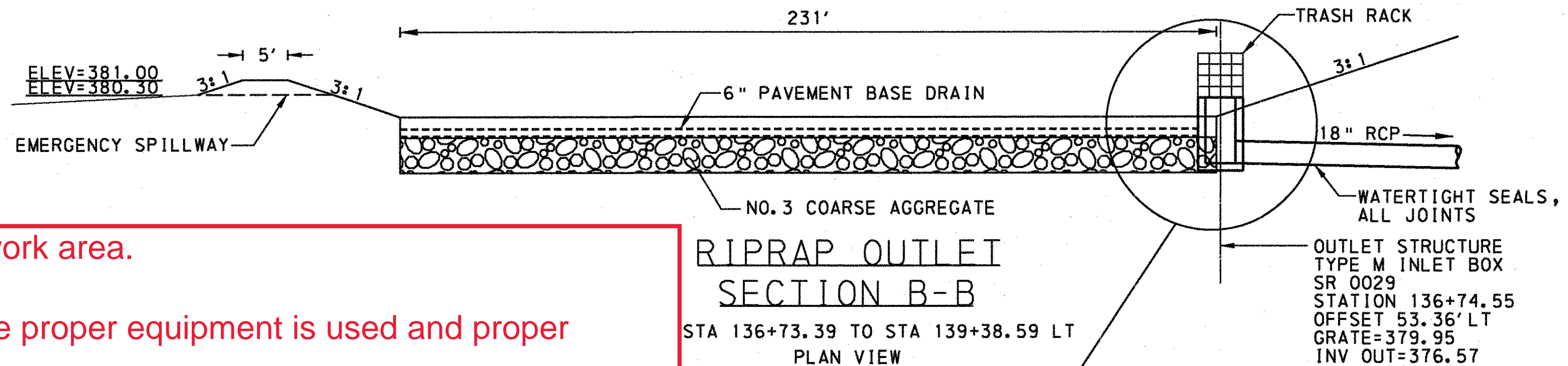
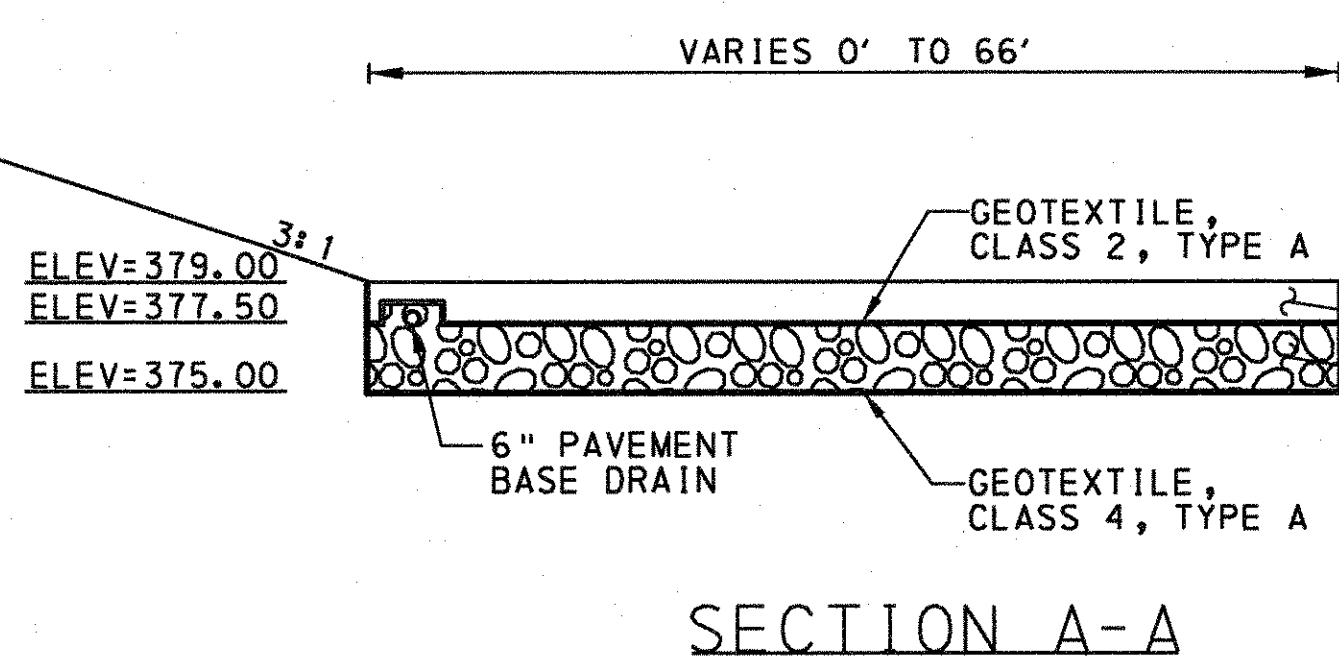
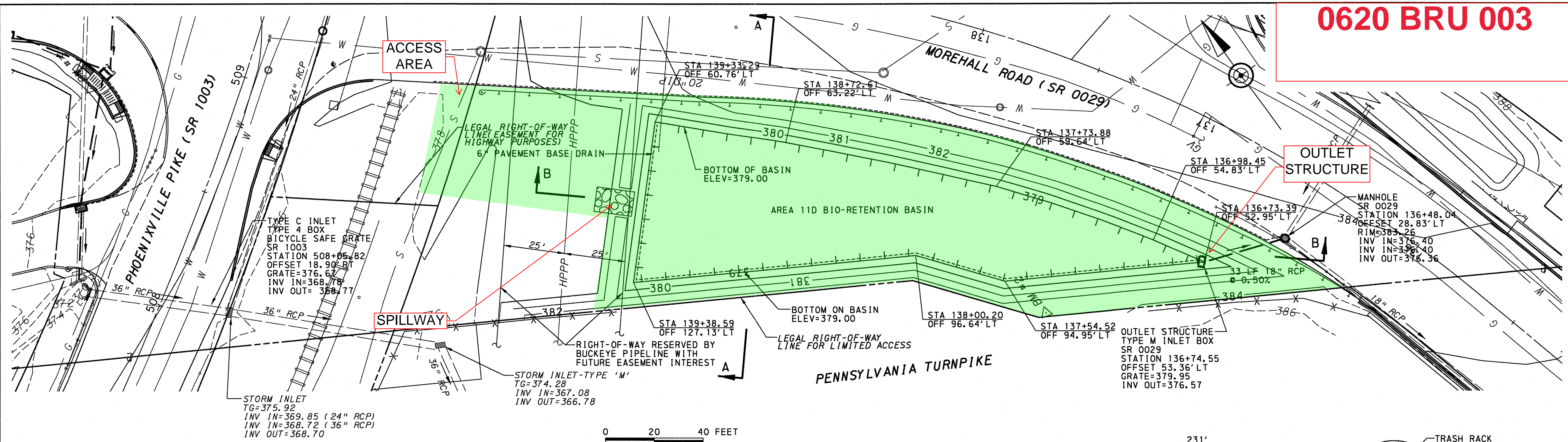
- Green shaded area is limit of maintenance work area.
- Basin bottom is an infiltrating surface. Ensure proper equipment is used and proper conditions exist prior to entry.
- Mow SCM bottom surface only during the fall maintenance cycle.
- Access VIA roadway shoulder.



POST CONSTRUCTION
STORMWATER MANAGEMENT
PROPOSED CONDITIONS PLAN



0:\PHD\121640_001_SR_41_Land_SR_3033\CADD\16-Water_Resources\Drawings\Stormwater_Management\Plan_Sheets\PCS\PCS-PC-015.dgn
3/30/2016 11:14:33 AM

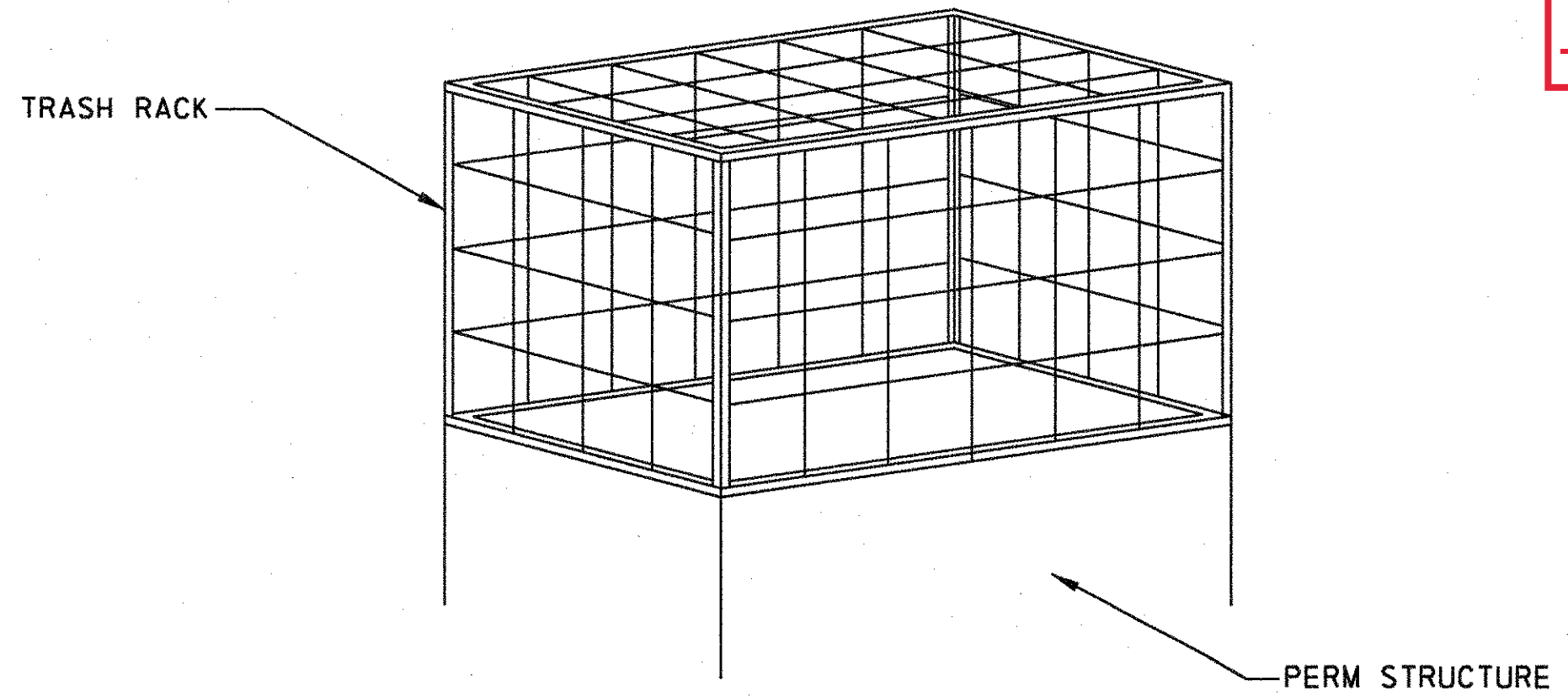
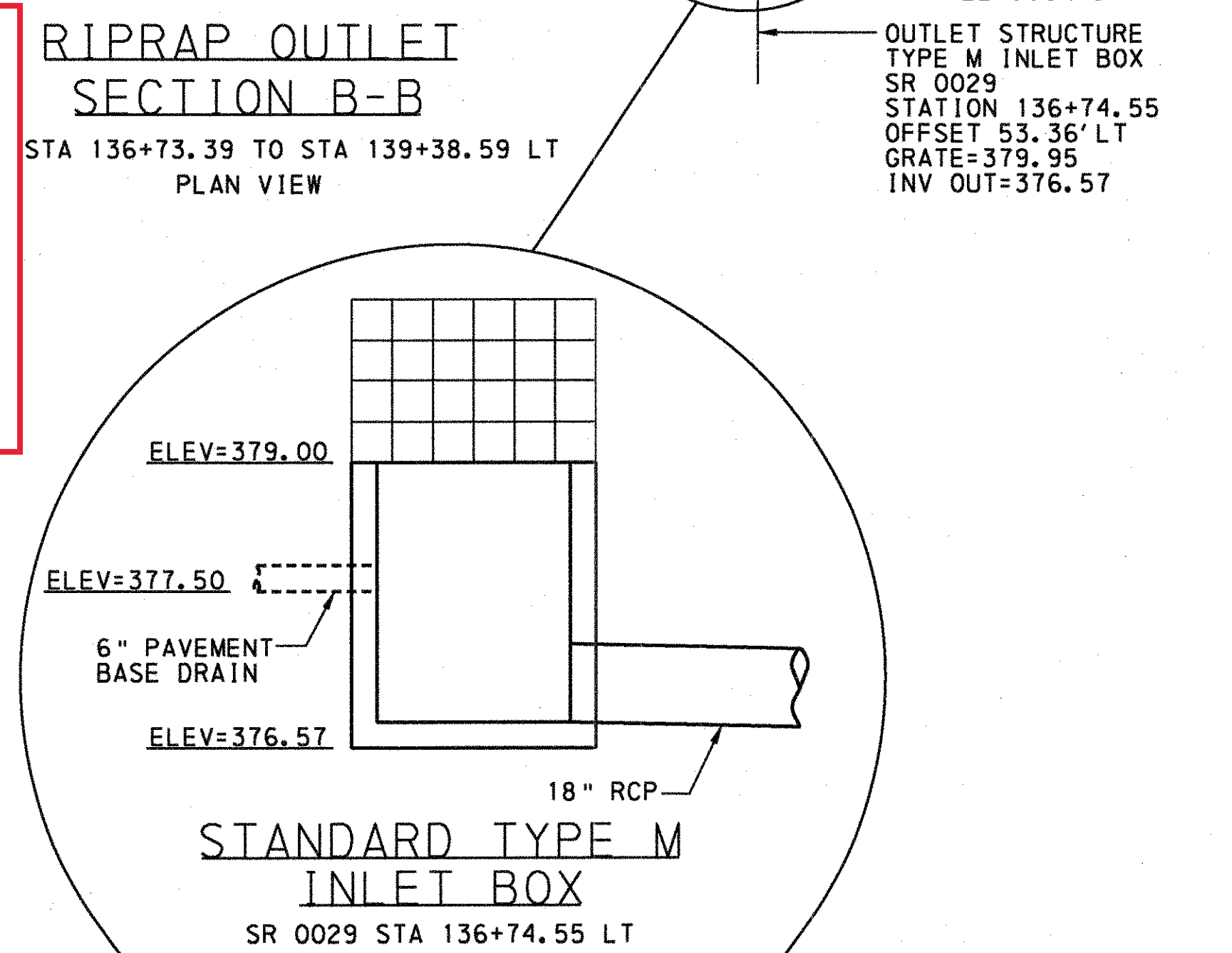


-Green shaded area is limit of maintenance work area.

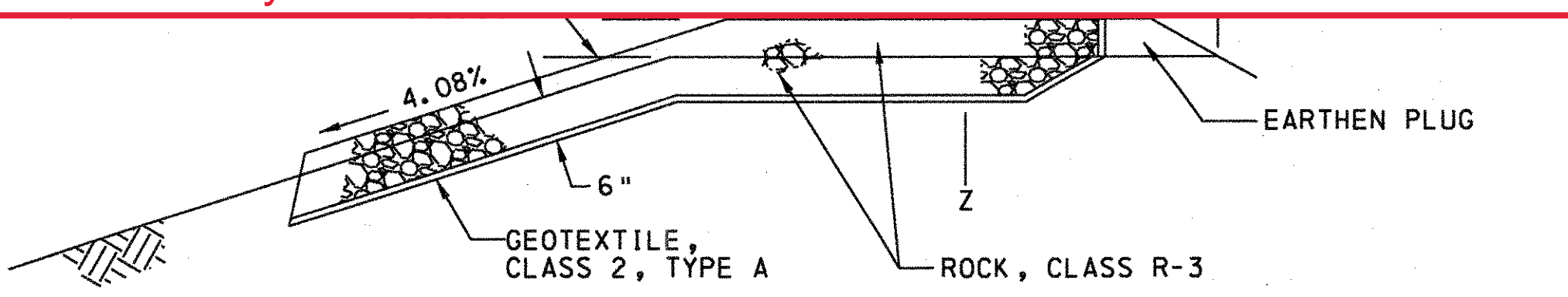
-Basin bottom is an infiltrating surface. Ensure proper equipment is used and proper conditions exist prior to entry.

-Mow SCM bottom surface only during the fall maintenance cycle.

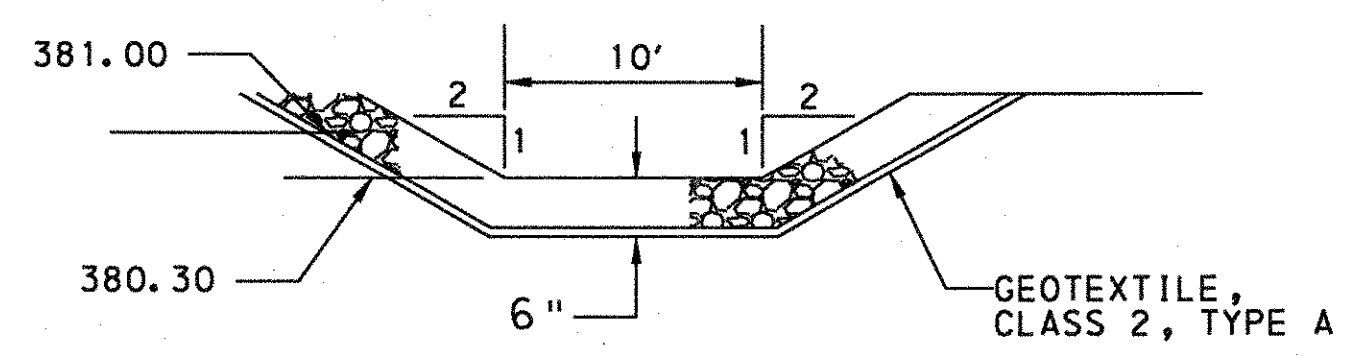
-Access VIA roadway shoulder.



TRASH RACK COMPOSED OF 1" X 1" X 1/8" L (TYP.) AND #4 BARS (TYP.) WELDED TO THE ANGLES AND AT EACH INTERSECTION OF THE BARS; #4 BARS SPACED @ 1/2 THE DIAMETER OF THE BARREL MAX.

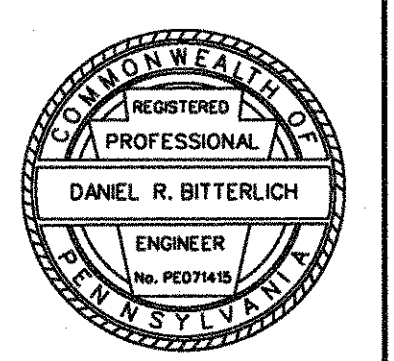


EMBANKMENT SECTION ALONG EMERGENCY SPILLWAY
SR 0029 STA 139+40.19 TO STA 139+55.62 LT



WEIR
SR 0029 STA 139+40.19 TO STA 139+55.62 LT
SECTION Z-Z

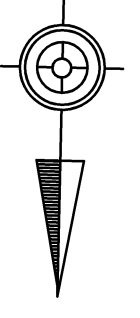
POST-CONSTRUCTION STORMWATER MANAGEMENT PLAN



SOIL AMENDMENTS AND RESTORATION
THE CONTRACTOR SHALL BE REQUIRED TO INSTALL SOIL AMENDMENTS AND RESTORE ALL DISTURBED AREAS WITHIN THE PROJECT LIMITS INCLUDING ALL AREAS COMPACTED BY CONSTRUCTION EQUIPMENT PRIOR TO FINAL STABILIZATION. SOIL AMENDMENTS AND RESTORATION SHALL FOLLOW THE PROCEDURE INDICATED ON SHEET 25 OF THE POST CONSTRUCTION STORMWATER MANAGEMENT PLANS. LIMITS SHALL INCLUDE ALL LAWN AREAS THAT HAVE BEEN DISTURBED DURING CONSTRUCTION OR WHICH CONSTRUCTION EQUIPMENT HAS COMPACTED.

-Green shaded area is limit of maintenance work area.
-Basin bottom is an infiltrating surface. Ensure proper equipment is used and proper conditions exist prior to entry.
-Mow SCM bottom surface only during the fall maintenance cycle.
-Access VIA roadway shoulder.

11/13/2013
PLOTTED:



RUTGERS DRIVE
T-510

OUTLET
STRUCTURE

SWM #4-2
BIORETENTION BASIN /
INFILTRATION BED
SEE DETAIL SHEET 27

ROCK
APRON

SWM #4-1
INFILTRATION BED
SEE DETAIL
SHEET 27

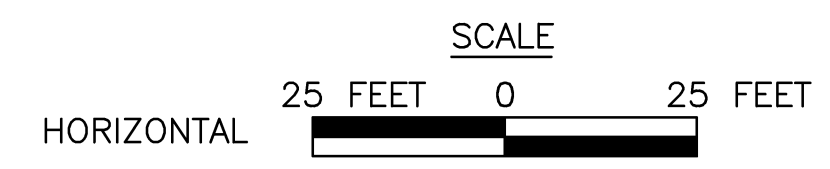
SWM #5-1
BIORETENTION BASIN
SEE DETAIL SHEET 28

SEE SHEET 14 OF 40

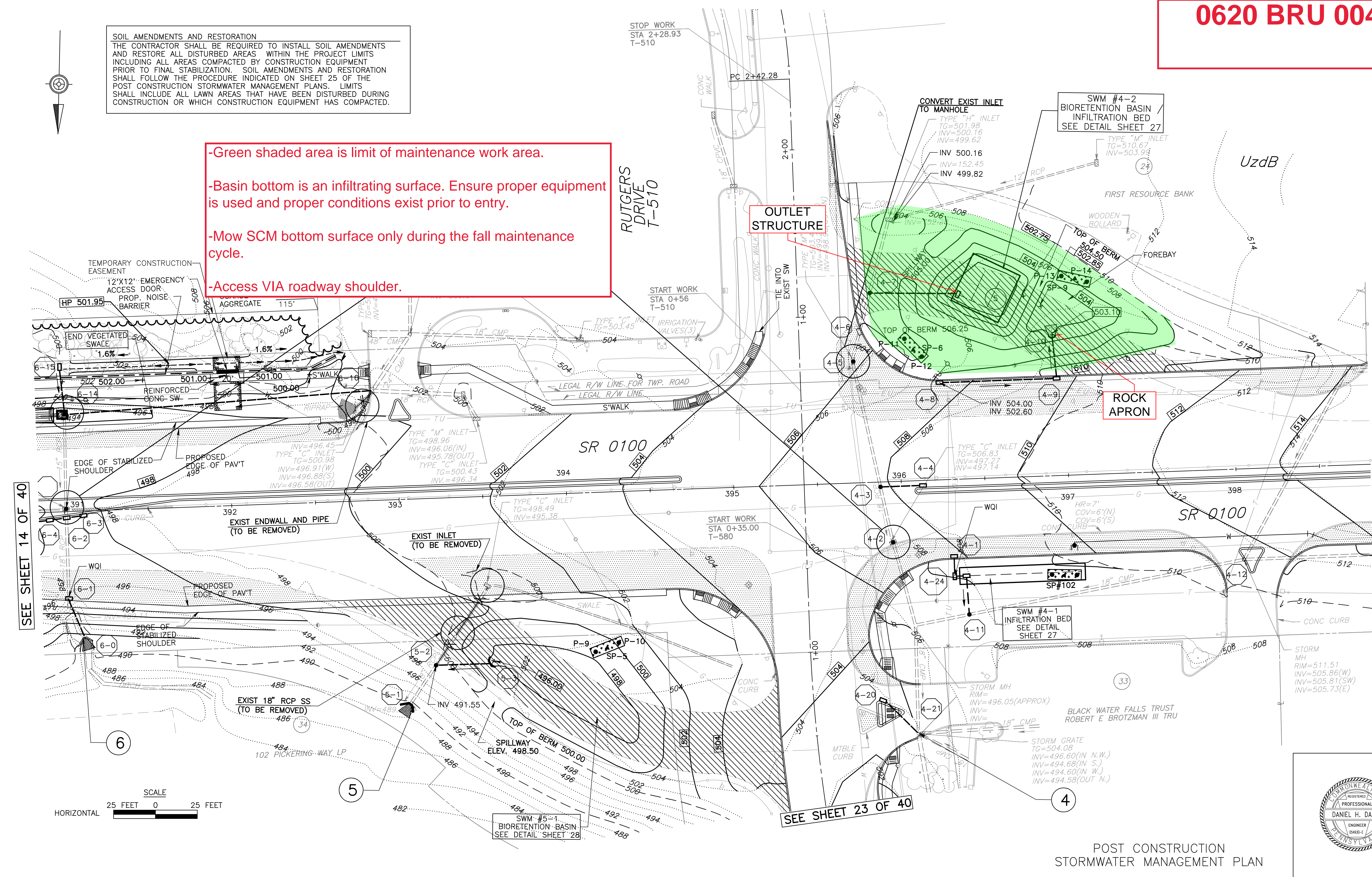
SEE SHEET 16 OF 40

SEE SHEET 23 OF 40

OPERATOR: F:\UB\1265-166\Plan Set\rt100-b15.pro
FILE NAME:



POST CONSTRUCTION
STORMWATER MANAGEMENT PLAN

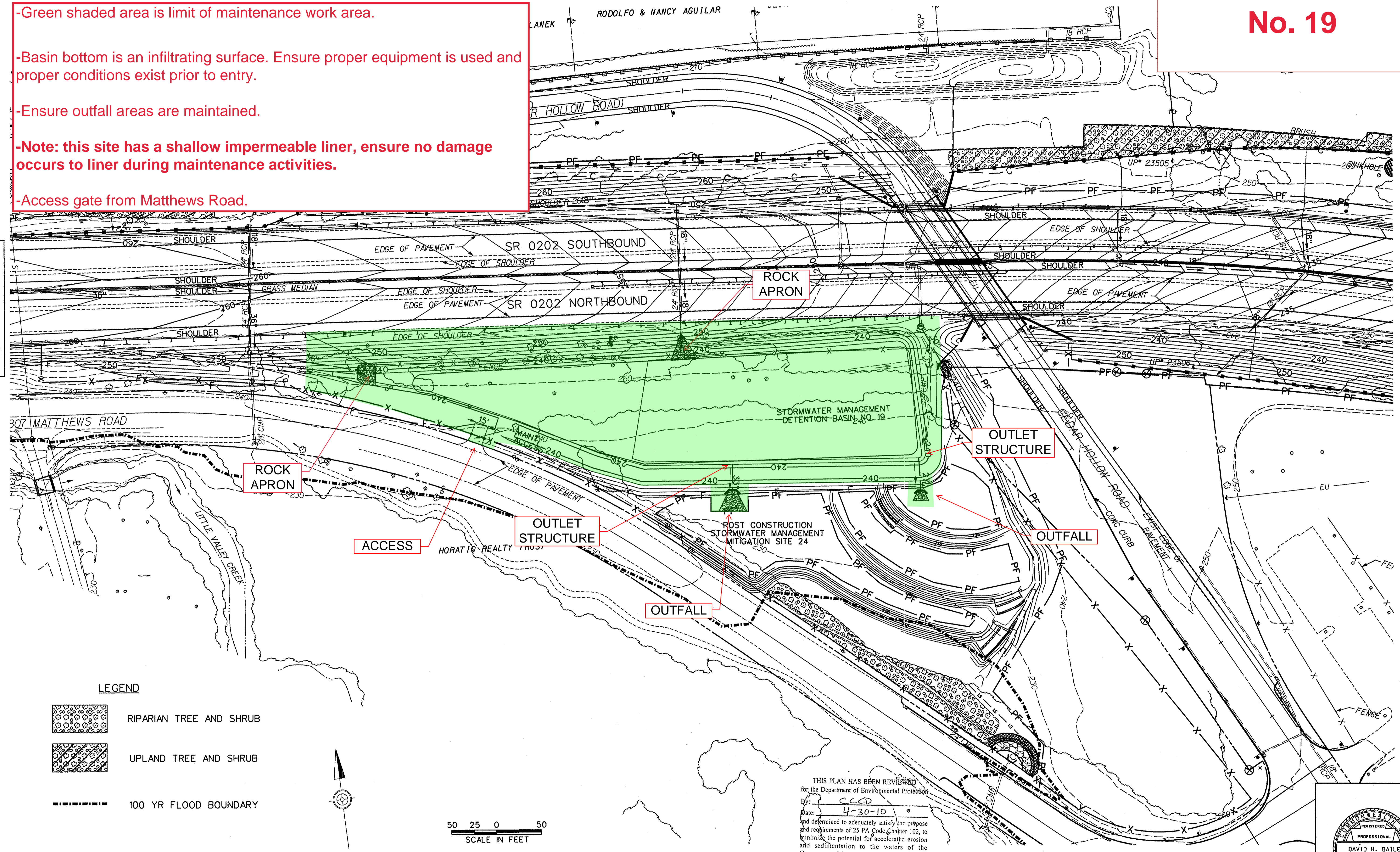


0620 BUD Basin No. 19

- Green shaded area is limit of maintenance work area.
- Basin bottom is an infiltrating surface. Ensure proper equipment is used and proper conditions exist prior to entry.
- Ensure outfall areas are maintained.
- Note: this site has a shallow impermeable liner, ensure no damage occurs to liner during maintenance activities.
- Access gate from Matthews Road.

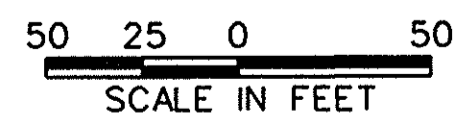
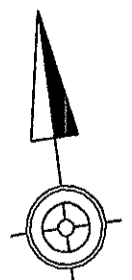
SEE SHEET 41 OF 47

SEE SHEET 43 OF 47



LEGEND

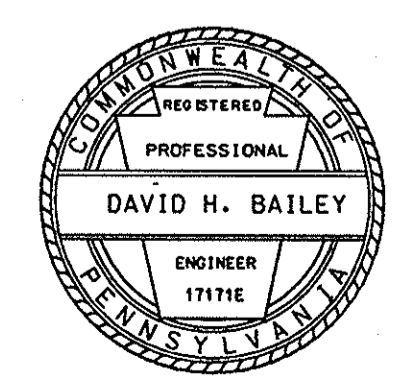
- RIPARIAN TREE AND SHRUB
- UPLAND TREE AND SHRUB
- 100 YR FLOOD BOUNDARY



THIS PLAN HAS BEEN REVIEWED
for the Department of Environmental Protection
By: CCD
Date: 4-30-10
and determined to adequately satisfy the purpose
and requirements of 25 PA Code Chapter 102, to
minimize the potential for accelerated erosion
and sedimentation to the waters of the
Commonwealth.
PAE 011505008-R1

NOTE:
FOR MITIGATION SITE PLANTINGS SEE MITIGATION SITE PLANS AND DETAILS.
FOR ADDITIONAL LANDSCAPE PLANTINGS SEE ROADSIDE DEVELOPMENT PLANS.

**POST CONSTRUCTION
STORMWATER MANAGEMENT
RIPARIAN BUFFER PLANTING PLAN**



M:\4000\4023 sr 0202\300\Cadd Files\Section 320\PCSM\Ribarian Plans\44PCSMRIP.dgn